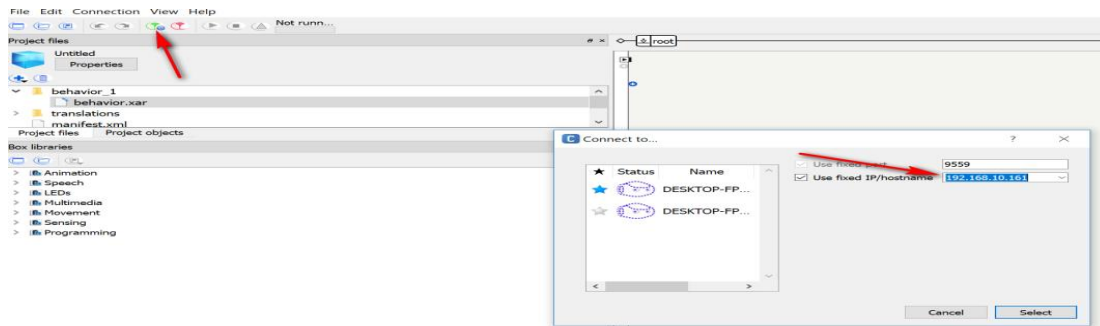


Program the NAO - activity 1

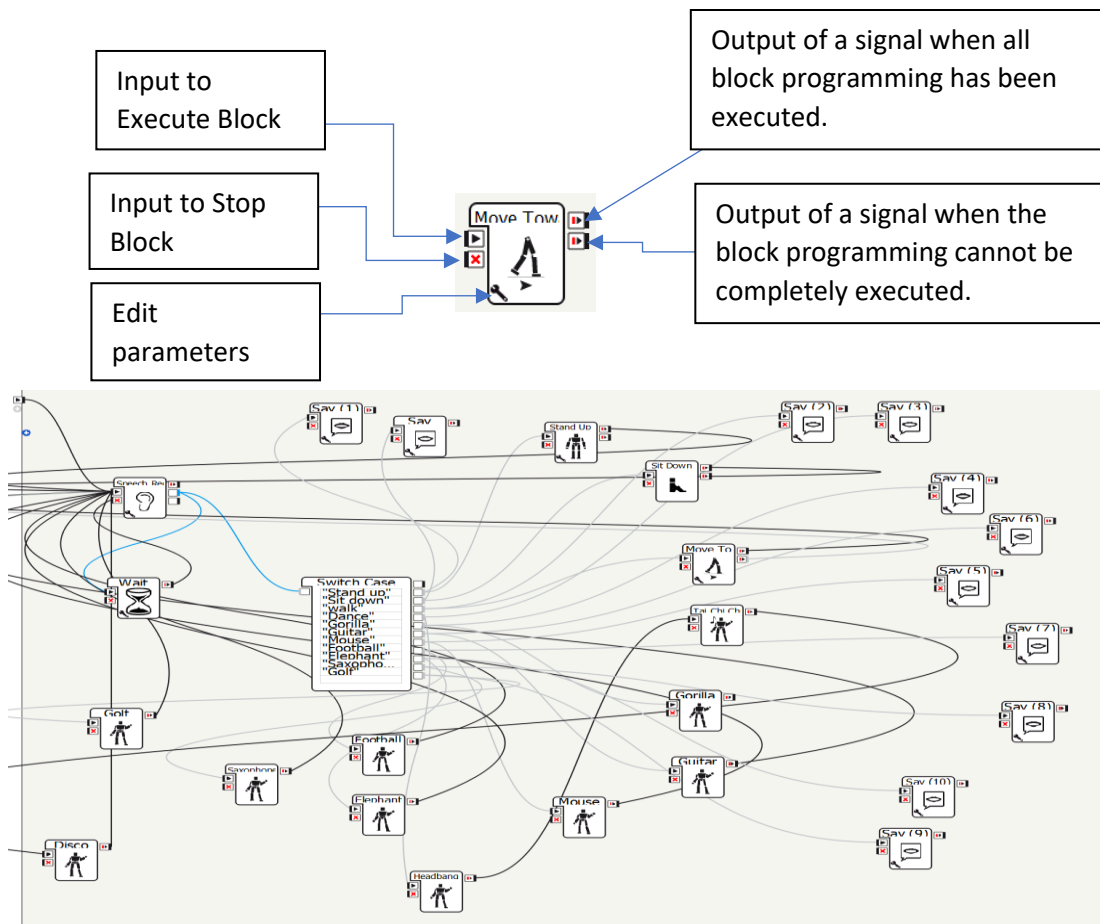
NAO is programmed with the Choregraphe application available here:

<https://developer.softbankrobotics.com/nao6/downloads/nao6-downloads-windows>

After starting the application, the robot is connected by its IP address. We must click on the navel of the NAO so that it tells us its IP address.



Programming can be done by dragging the blocks, linking them and editing the various parameters.



Blocks are organized into folders as shown below.

- Creation
 - Dialog animations
 - Space & time
 - Self & others
 - Affirmation
 - Negation
 - Question
 - Exclamation
 - Enumeration
 - Moods
 - Positive
 - Neutral
 - Negative
 - Entertainment
 - Animals
 - Dances
 - Fun
 - Music
 - Sports
- Speech
 - Creation
 - Speech Settings
- LEDs
 - Creation
 - LEDs Library
- Multimedia
 - Internet
 - Sound
 - Tablet
 - Video
- Movement
 - Motors
 - Navigation
 - Oriented
 - Posture
 - Safety
- Sensing
 - Vision
 - Hearing
 - Human Understanding
 - Touch
 - Sonar
- Programming
 - Behavior Control
 - Data Edition
 - Logic
 - Math
 - Memory
 - Robot Information
 - System Actions
 - Templates
 - Time
 - Tools

After we finish programming, we need to load it so that the robot executes it. To do this, click on the small triangle at the top.



Try programming the NAO to do the following:

Get up, dance “Tai chi chuan”, sit down again and say “I love to dance”.

